

www.indiratrade.com



MONDAY

CURRENCY COMMODITIES

WEEKLY REPORT
26 AUG 2019 TO 30 AUG 2019

EDGE



INDIRA SECURITIES PVT. LTD.



WEEKLY INDICES CHANGES

INDEX	CLOSE	PREV. CLOSE	Change (%)
SENSEX	36701.16	37350	-1.74%
NIFTY	10,829.30	11,047.00	-1.97%
DOW	25628.9	25886	-0.99%
NASDAQ	7751.77	7895.99	-1.83%
FTSE	7094.98	7117.15	-0.31%
NIKKEI	20248.5	20529.5	-1.37%
DAX	11,611.50	11,562.70	0.42%
CAC	5,326.87	5,300.79	0.49%

SS

Market Round Up:

- China's tariff blows weighs on Wall Street, Powell speech in focus: - U.S. stocks fell on Friday after China threatened to impose additional tariffs on \$75 billion worth of U.S. goods, ahead of a highly anticipated speech from Federal Reserve Chair Jerome Powell.
- China's latest tariffs, which follow U.S. duties on \$300 billion worth of Chinese goods, threaten to prolong an ongoing trade war between the world's top two economies that has raised concerns about slowing global growth.
- China's commerce ministry said it would impose additional tariffs on thousands of U.S. products, including agricultural products, crude oil, small aircraft and cars. Tariffs on some products would take effect on Sept. 1 and others on Dec. 15
- U.S. Dollar Flat as Powell Promises to 'Sustain' Economic Expansion: - The U.S. dollar was flat on Friday after Federal Reserve Chairman Jerome Powell said the central bank would keep an eye on the economy and act as needed, but failed to give any new guidance on interest rates.
- Powell seemed to push back against pressure to cut rates aggressively. U.S. President Donald Trump has called for a full percentage point cut and markets expect the central bank to keep easing its monetary policy.

RBI REFERENCE RATE

INDEX	CLOSE	PREV. CLOSE
USDINR	71.7267	71.2872
EURINR	79.3943	79.1468
JPYINR	67.2600	67.1700
GBPINR	87.6189	86.3269

FII FIGURES

DATE	FII FIGURES IN CRORE
19/07	-305.74
20/07	373.23
21/07	-770.81
22/08	-902.99
23/08	-1,737.20
NET	-3344

DII FIGURES

DATE	DII FIGURES IN CRORE
19/07	386.23
20/07	296.41
21/07	353.97
22/08	1719.07
23/08	1,548.49
NET	+4304



DOLLAR INDEX CHART



US Dollar Index	
RSI(14)	BUY
STOCH(9,6)	SELL
STOCHRSI(14)	SELL
MACD(12,26)	BUY
ADX(14)	SELL
Williams %R	NETURAL
CCI(14)	BUY
Highs/Lows(14)	BUY
Ultimate Oscillator	SELL
ROC	BUY
BUY	4
SELL	4
NEUTRAL	1
SUMMARY	NETURAL

USDINR TECHNICAL CHART (INDIAN RUPEE)



USDINR.Rolling	
RSI(14)	BUY
STOCH(9,6)	BUY
STOCHRSI(14)	BUY
MACD(12,26)	BUY
ADX(14)	SELL
Williams %R	BUY
CCI(14)	BUY
Highs/Lows(14)	0
Ultimate Oscillator	BUY
ROC	BUY
BUY	8
SELL	1
NEUTRAL	0
SUMMARY	STRONG BULLISH



DOMESTIC CURRENCY

Domestic	S2	S1	PIVOT	R1	R2
USDINR	70.61	70.9	71.23	71.53	71.86
EURINR	77.95	78.46	79.38	79.88	80.8
GBPINR	85.1	85.84	86.32	87.06	87.54
JPYINR	65.82	66.4	67.23	67.81	68.65

GLOBAL CURRENCY

Global	S2	S1	PIVOT	R1	R2
DOLLAR INDEX	96.93	97.56	97.95	98.58	98.97
EURUSD	1.1	1.1	1.11	1.12	1.13
GBPUSD	1.2	1.21	1.21	1.22	1.22
USDJPY	104.47	105.33	105.95	106.81	107.43

CURRENCY PERFORMANCE

CURRENCY	CLOSE PRICE	DAY	WEEK	MONTHLY	YEARLY
EURO	1.11383	-0.05%	0.55%	0.05%	-4.62%
POUND	1.22656	-0.09%	1.16%	-0.90%	-4.85%
AUSTRALIAN DOLLAR	0.67426	-0.17%	-0.27%	-2.41%	-8.25%
NEWZEALAND DOLLAR	0.63882	-0.22%	-0.31%	-3.63%	-4.55%
YEN	105.53	0.13%	-0.98%	-2.78%	-4.95%
YUAN	7.15829	0.35%	1.16%	3.84%	5.33%
SWISS FRANC	0.97585	0.14%	-0.54%	-1.55%	-0.35%
CANADIAN DOLLAR	1.32965	0.14%	-0.21%	1.02%	2.56%
MEXICAN PESO	19.9432	0.15%	0.40%	4.62%	6.27%
INDIAN RUPEE	71.492	-0.58%	0.48%	3.66%	2.19%
BRAZILIAN REAL	4.1211	0.04%	2.89%	9.24%	1.08%
RUSSIAN RUBBLE	66.2009	0.31%	-0.40%	4.58%	-1.75%
DOLLAR INDEX	97.74	0.10%	-0.60%	-0.22%	3.14%
KORREAN WON	1216.15	0.29%	0.37%	2.83%	9.78%
SOUTH AFRICAN RAND	15.3361	0.65%	-0.78%	8.32%	8.30%
SINGAPORE DOLLAR	1.38908	0.16%	0.18%	1.37%	1.97%
HONGKONG DOLLAR	7.84324	0.00%	-0.02%	0.27%	-0.08%

COMMODITIES

FUNDAMENTAL OF COMMODITIES

MAJOR COMMODITIES

MCX ENERGY WEEKLY

Commodity	S2	S1	Pivot	R1	R2
Crude oil	3598.3	3744.7	3898.3	4044.7	4198.3
Natural Gas	135.8	142.1	151.8	158.1	167.8

MCX BASE METAL WEEKLY

Commodity	S2	S1	Pivot	R1	R2
Copper	417.2	425.2	440.6	448.7	464.1
Zinc	184.8	186.6	189.5	191.3	194.2
Lead	141.9	146.7	152.8	157.6	163.7
Nickel	958.9	990.7	1011.1	1042.9	1063.3

PRECIOUS METAL WEEKLY

Commodity	S2	S1	Pivot	R1	R2
Gold	33783.0	34680.0	35162.0	36059.0	36541.0
Silver	39758.7	40561.3	41087.7	41890.3	42416.7

Updates:

- Gold Prices Turn Higher after China Tariff Retaliation, Powell on Radar: - Gold prices turned higher on Friday after China announced retaliatory tariffs on U.S., increasing demand for the safe-haven precious metal ahead of a widely anticipated speech from Federal Reserve President Jerome Powell.
- Oil Prices Dip Ahead of Powell Speech: - Oil prices traded sharply lower on Friday, after China announced it would impose import tariffs averaging 10% on \$75 billion of U.S. goods, including crude and autos.
- China's Ministry of Commerce said it would impose additional tariffs on a total of \$75 billion of U.S. goods in response to the latest ones planned by U.S. President Donald Trump on \$300 billion of Chinese goods.

International Commodity	S2	S1	Pivot	R1	R2	CMP	PREV CLOSE
Gold COMEX	\$1,394.00	\$1,426.00	\$1,444.00	\$1,476.00	\$1,494.00	\$1,510.00	\$1,458.00
SILVER COMEX	15.58	15.93	16.28	16.63	16.98	16.94	16.27
NYMEX CRUDE	50.79	53.23	56.02	58.46	61.25	52.54	55.66
BRENT CRUDE	56.85	59.06	62.24	64.45	67.63	57.77	61.27



COMMODITIES

MAJOR COMMODITIES

Commodity Major	Price	Day	Weekly	Monthly	Yearly
Crude Oil	53.7293	-1.00%	-4.40%	-4.18%	-21.97%
Brent	58.8896	-0.78%	-1.44%	-6.81%	-22.74%
Natural gas	2.1795	1.16%	-1.38%	1.80%	-24.22%
Gold	1539.99	0.87%	3.09%	8.02%	27.26%
Silver	17.6298	1.25%	4.58%	7.16%	18.70%
Platinum	861.36	0.91%	1.34%	-2.01%	7.74%
Palladium	1463.35	0.19%	-0.43%	-5.57%	54.63%
Copper	2.515	-0.63%	-3.10%	-7.12%	-6.97%
Lead	2070	0.60%	1.55%	-0.79%	0.05%
Aluminum	1770	0.23%	-1.23%	-3.07%	-17.04%
Tin	15880	-1.82%	-4.19%	-11.41%	-16.66%
Zinc	2254	0.40%	-0.31%	-8.34%	-11.26%



MCX GOLD CHART



Commodity	S2	S1	Pivot	R1	R2
Gold	33783.0	34680.0	35162.0	36059.0	36541.0

GOLD TECHNICAL INDICATOR	
RSI(14)	BUY
STOCH(9,6)	BUY
STOCHRSI(14)	BUY
MACD(12,26)	BUY
ADX(14)	SELL
Williams %R	BUY
CCI(14)	BUY
Highs/Lows(14)	BUY
Ultimate Oscillator	BUY
ROC	BUY
BUY	8
SELL	1
NEUTRAL	0
SUMMARY	STRONG BULLISH

GOLD INTERNATIONAL CHART



Commodity	S2	S1	Pivot	R1	R2
Gold	\$1,394.0	\$1,426.0	\$1,444.0	\$1,476.0	\$1,494.0

GOLD INTERNATIONAL TECHNICAL INDICATOR	
RSI(14)	BUY
STOCH(9,6)	SELL
STOCHRSI(14)	SELL
MACD(12,26)	BUY
ADX(14)	BUY
Williams %R	BUY
CCI(14)	BUY
Highs/Lows(14)	BUY
Ultimate Oscillator	BUY
ROC	BUY
BUY	7
SELL	2
NEUTRAL	0
SUMMARY	STRONG BULLISH



MCX SILVER CHART



Commodity	S2	S1	Pivot	R1	R2
Silver	39758.7	40561.3	41087.7	41890.3	42416.7

SILVER TECHNICAL INDICATOR	
RSI(14)	SELL
STOCH(9,6)	BUY
STOCHRSI(14)	BUY
MACD(12,26)	SELL
ADX(14)	SELL
Williams %R	NETURAL
CCI(14)	SELL
Highs/Lows(14)	BUY
Ultimate Oscillator	SELL
ROC	SELL
BUY	7
SELL	2
NEUTRAL	0
SUMMARY	STRONG BULLISH

SILVER INTERNATIONAL CHART



Commodity	S2	S1	Pivot	R1	R2
Silver	\$15.6	\$15.9	\$16.3	\$16.6	\$17.0

SILVER INTERNATIONAL TECHNICAL INDICATOR	
RSI(14)	BUY
STOCH(9,6)	SELL
STOCHRSI(14)	BUY
MACD(12,26)	BUY
ADX(14)	SELL
Williams %R	BUY
CCI(14)	BUY
Highs/Lows(14)	BUY
Ultimate Oscillator	BUY
ROC	BUY
BUY	7
SELL	2
NEUTRAL	0
SUMMARY	STRONG BULLISH



MCX COPPER CHART



Commodity	S2	S1	Pivot	R1	R2
Copper	417.2	425.2	440.6	448.7	464.1

COPPER TECHNICAL INDICATOR

RSI(14)	BUY
STOCH(9,6)	BUY
STOCHRSI(14)	BUY
MACD(12,26)	BUY
ADX(14)	SELL
Williams %R	NETURAL
CCI(14)	BUY
Highs/Lows(14)	BUY
Ultimate Oscillator	SELL
ROC	BUY
BUY	6
SELL	2
NEUTRAL	1
SUMMARY	STRONG BULLISH

COPPER INTERNATIONAL CHART



Commodity	S2	S1	Pivot	R1	R2
Copper	\$2.460	\$2.510	\$2.620	\$2.670	\$2.780

COPPER INTERNATIONAL TECHNICAL INDICATOR

RSI(14)	SELL
STOCH(9,6)	BUY
STOCHRSI(14)	BUY
MACD(12,26)	SELL
ADX(14)	SELL
Williams %R	SELL
CCI(14)	SELL
Highs/Lows(14)	BUY
Ultimate Oscillator	SELL
ROC	SELL
BUY	3
SELL	7
NEUTRAL	0
SUMMARY	STRONG BEARISH



MCX CRUDE CHART

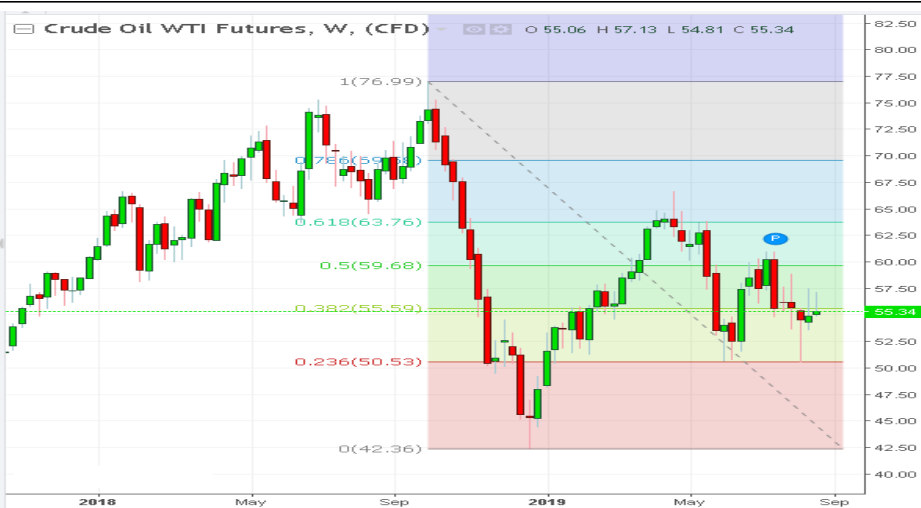


Commodity	S2	S1	Pivot	R1	R2
Crude oil	3598.3	3744.7	3898.3	4044.7	4198.3

CRUDEOIL TECHNICAL INDICATOR

RSI(14)	SELL
STOCH(9,6)	BUY
STOCHRSI(14)	BUY
MACD(12,26)	SELL
ADX(14)	SELL
Williams %R	NETURAL
CCI(14)	BUY
Highs/Lows(14)	BUY
Ultimate Oscillator	SELL
ROC	BUY
BUY	4
SELL	4
NEUTRAL	1
SUMMARY	NETURAL

NYMEX CRUDE CHART



Commodity	S2	S1	Pivot	R1	R2
Crude oil	\$50.8	\$53.2	\$56.0	\$58.5	\$61.3

CRUDE.OILNYM TECHNICAL INDICATOR

RSI(14)	SELL
STOCH(9,6)	BUY
STOCHRSI(14)	BUY
MACD(12,26)	SELL
ADX(14)	SELL
Williams %R	NETURAL
CCI(14)	SELL
Highs/Lows(14)	BUY
Ultimate Oscillator	SELL
ROC	BUY
BUY	3
SELL	5
NEUTRAL	1
SUMMARY	MILD BEARISH



MCX NATURAL GAS



Commodity	S2	S1	Pivot	R1	R2
Natural Gas	135.8	142.1	151.8	158.1	167.8

NATURAL GAS INTERNATIONAL



Commodity	S2	S1	Pivot	R1	R2
Natural Gas	\$1.920	\$2.020	\$2.180	\$2.280	\$2.430

NATURALGAS TECHNICAL INDICATOR

RSI(14)	SELL
STOCH(9,6)	BUY
STOCHRSI(14)	BUY
MACD(12,26)	BUY
ADX(14)	SELL
Williams %R	NETURAL
CCI(14)	SELL
Highs/Lows(14)	BUY
Ultimate Oscillator	SELL
ROC	SELL
BUY	4
SELL	5
NEUTRAL	1
SUMMARY	NETURAL

NATURAL GAS INTER. TECHNICAL INDICATOR

RSI(14)	SELL
STOCH(9,6)	BUY
STOCHRSI(14)	BUY
MACD(12,26)	SELL
ADX(14)	SELL
Williams %R	SELL
CCI(14)	SELL
Highs/Lows(14)	BUY
Ultimate Oscillator	SELL
ROC	SELL
BUY	3
SELL	7
NEUTRAL	0
SUMMARY	STRONG BEARISH

IMP ECONOMIC DATA TO WATCH FOR THE WEEK

[illegible]



204 Amardarshan Building 3rd floor Saket Nagar , Indore-452018

Call: 0731-4797170-171-172

To get regular updates please whatsapp us on Mob. +91 9300059777

DISCLAIMER

This report is for private circulation within the Indira Group. This report is strictly confidential and for information of the selected recipient only and may not be altered in any way, transmitted to, copied or distributed, in part or in whole, to any other person or to the media or reproduced in any form. This report should not be construed as an offer or solicitation to buy or sell any securities or any interest in securities. It does not constitute a personal recommendation or take into account the particular investment objectives, financial situations, or any such factor. The information, opinions estimates and forecasts contained here have been obtained from, or are based upon, sources we believe to be reliable, but no representation of warranty, express or implied, is made by us to their accuracy or completeness. Opinions expressed are our current opinions as of our current opinions as of the data appearing on this material only and are subject to change without notice.